

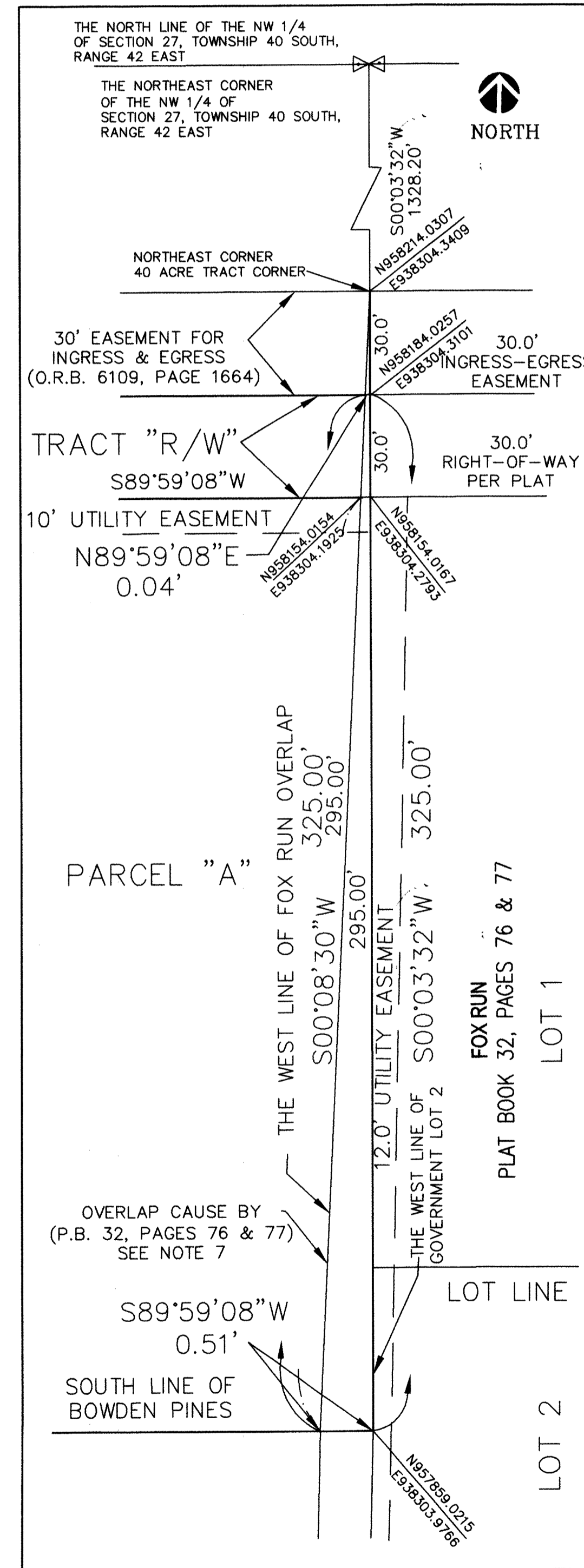
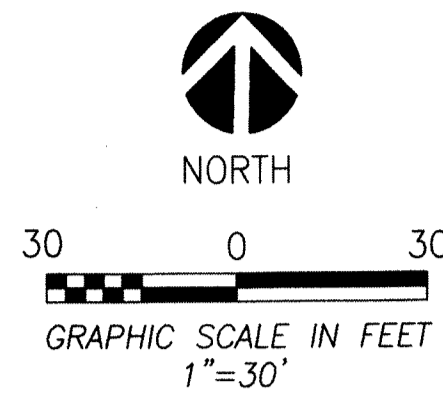
"NOTICE: THIS PLAT, AS RECORDED IN ITS GRAPHIC FORM, IS THE OFFICIAL DEPICTION OF THE SUBDIVIDED LANDS DESCRIBED HEREIN AND WILL IN NO CIRCUMSTANCES BE SUPPLANTED IN AUTHORITY BY ANY OTHER GRAPHIC OR DIGITAL FORM OF THE PLAT. THERE MAY BE ADDITIONAL RESTRICTIONS THAT ARE NOT RECORDED ON THIS PLAT THAT MAY BE FOUND IN THE PUBLIC RECORDS OF PALM BEACH COUNTY."

BOWDEN PINES

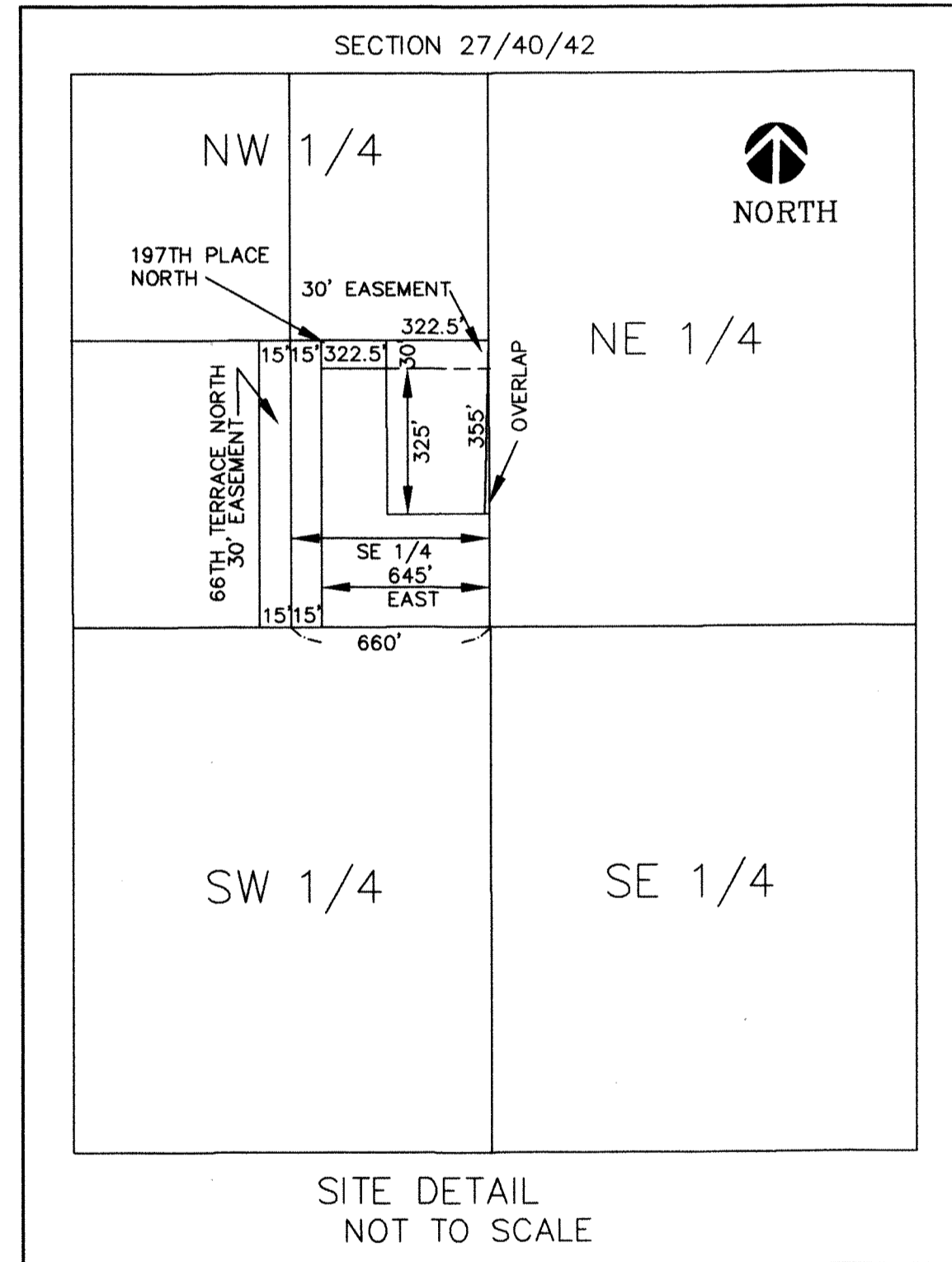
LYING IN AND BEING A PORTION OF THE NORTHWEST QUARTER OF SECTION 27, TOWNSHIP 40 SOUTH, RANGE 42 EAST PALM BEACH COUNTY, FLORIDA

195

SHEET 2 OF 2



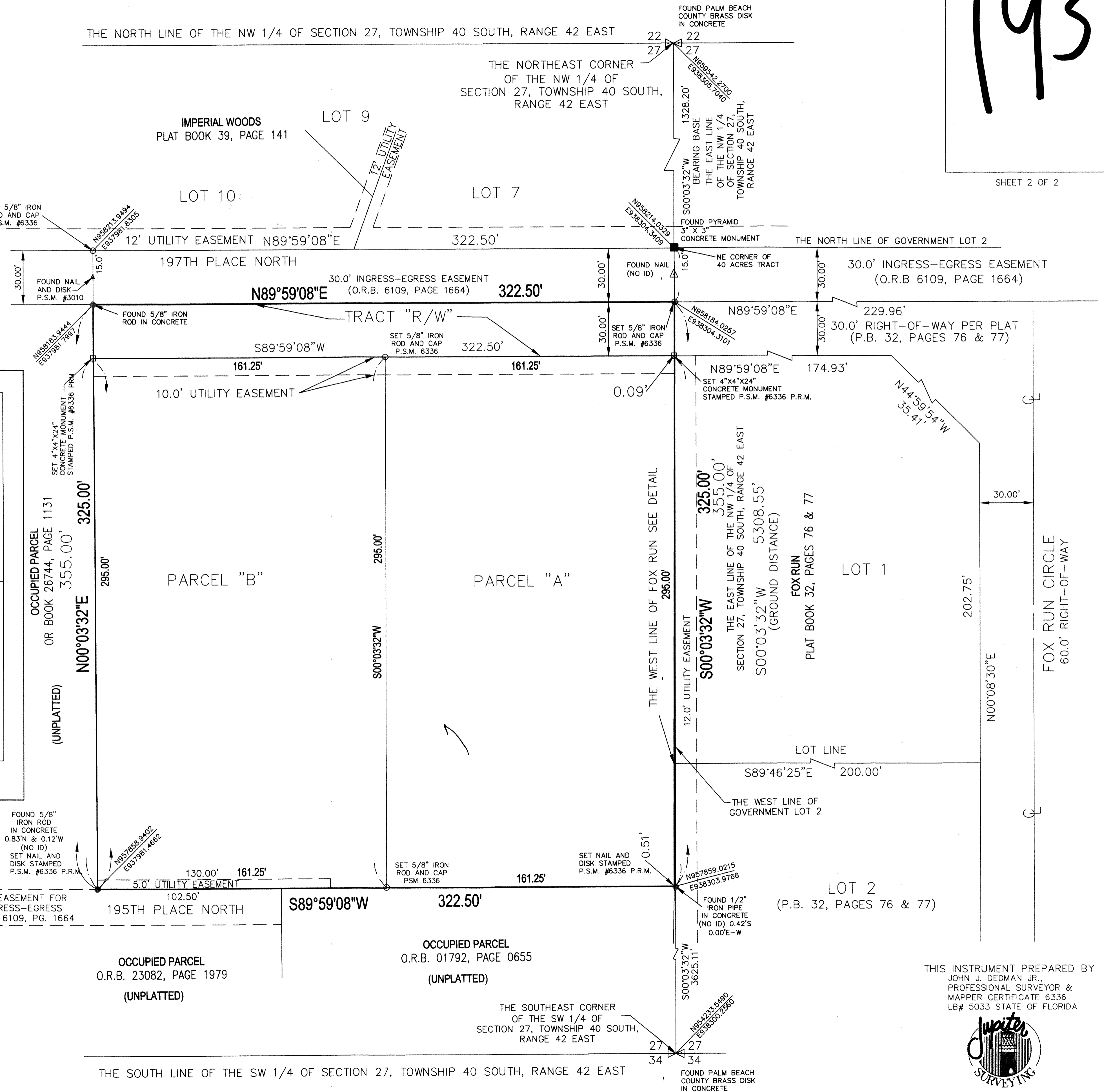
FOX RUN DETAIL
NOT TO SCALE
SEE NOTE #6



LEGEND

- INDICATES 5/8" IRON ROD OR IRON PIPE IN CONCRETE
- INDICATES SET 5/8" IRON ROD AND P.S.M. #6336
- P.S.M. INDICATES PROFESSIONAL SURVEYOR AND MAPPER
- U.E. INDICATES UTILITY EASEMENT
- INDICATES CENTERLINE
- ⊕ INDICATES SET CONCRETE MONUMENT
- P.R.M. INDICATES SET PERMANENT REFERENCE MONUMENT
- MONUMENT
- ▲ INDICATES NAIL
- L.B. INDICATES LICENSED BUSINESS
- P.B. INDICATES PLAT BOOK
- PG. INDICATES PAGE
- P.O.B. POINT OF BEGINNING
- P.O.C. POINT OF COMMENCEMENT
- O.R.B. INDICATES OFFICIAL RECORD BOOK
- INDICATES NOT TO SCALE
- N INDICATES NORTH
- E INDICATES EAST
- NO I.D. INDICATES NO IDENTIFICATION
- R/W INDICATES RIGHT-OF-WAY
- ⊗ INDICATES PALM BEACH COUNTY BRASS DISK IN CONCRETE
- INDICATES STATE PLAIN COORDINATES
- - - INDICATES EASEMENT LINES

N854241.6200
E935658.0594



THE SOUTH LINE OF THE SW 1/4 OF SECTION 27, TOWNSHIP 40 SOUTH, RANGE 42 EAST

THIS INSTRUMENT PREPARED BY
JOHN J. DEDMAN, JR.,
PROFESSIONAL SURVEYOR &
MAPPER CERTIFICATE 6336
LB# 5033 STATE OF FLORIDA



JUPITER SURVEYING, INC.
6520 195th Place North
Jupiter, Florida 33458
561-935-7385